

Easy Lift Equipment Co., Inc.

2 Mill Park Court, Newark, Delaware 19713 - Phone: 800-233-1800 / 302-737-7000



DRUM-HAULERS® & ROLL-HAULERS

Drum-Haulers® & Roll-Haulers make the task of handling plastic, fiber, and steel drums, as well as roll materials and cylinders, both safe and easy. Drum- and Roll-Haulers are the most ergonomic units available for these types of applications due to their wide range of configurations, which can be suited to fit your specific needs. Drum- & Roll-Haulers are designed to work in tightly confined production areas and are completely counterbalanced, requiring no outriggers for stability and are ideal for traveling over long distances. Most models, excluding forward rotation models, are designed to fit through a standard 30” (76 cm) wide x 84” (213 cm) high doorway. The large industrial battery provides enough power to run continuously for up to 16 hours on a single charge.

Contents

Drum- & Roll-Hauler Standard Features & Specifications	3
Tiller Handle Overview	3
2-inch Display, Key Switch & Red Emergency Switch Overview	4
Standard Base Frame Lengths	4
Battery Options & Charging the Equipment	5
Non-Rotating Drum-Haulers® - Features & Options	6
Eagle-Grip® 3 Single Clamping Mechanism	7
Eagle-Grip® 4 Double Clamping Mechanism	7
Drum-Hauler® Extended Reach Option with EG3 or EG4	8
Eagle-Grip® 1 Single Clamping Mechanism	8
Eagle-Grip® 2L Double Clamping Mechanism	8
Mauser Clamping Jaws with EG3 or EG4	8
Remote-Control Box Functions for Rotating Drum- & Roll-Haulers.....	9
Rotating Drum-Haulers® - Features & Options.....	10
SR Strap Rotator.....	11
FSR Forward Strap Rotator.....	11
CR Clamp Rotator.....	12
FCR Forward Clamp Rotator	13
CR & FCR Clamp Options.....	13-14
RCR1324-8 Roll Clamp Rotator (for use with drums)	15
RCR1626-8 Roll Clamp Rotator (for use with drums)	16
Custom Clamps for Special Applications	17
Drum-Hauler® Additional Options.....	18-22
Battery Roll-Out Tray and Charging Stand.....	23
Rotating Roll-Haulers - Features & Options.....	24
RCR1324-16 Roll Clamp Rotator	25
RCR1626-16 Roll Clamp Rotator	26
RCR2336-16 Roll Clamp Rotator	27
RCR3148-16 Roll Clamp Rotator	28
SRCR Small Roll Clamp Rotator.....	29
LRCR Large Roll Clamp Rotator.....	30
Roll-Hauler Additional Options.....	31
RH4000 & RH6000 Self-Powered Roll Transporters	32
Cylinder Handling with CCR Clamp	33
Roll-Posts, Tank Haulers, and Walkie Stackers.....	34

EASY LIFT EQUIPMENT., INC. IS AN
ISO 9001: 2015 CERTIFIED COMPANY



STANDARD FEATURES AND SPECIFICATIONS INCLUDED ON ALL MODELS LISTED IN THIS BROCHURE:

Finish: Equipment comes standard with safety orange powder coating for durability.

Drive Control: High-performance 3-phase AC drive motor.

Speed Control: Electronic Speed Controller with variable forward and reverse speeds.

Braking: Electro-mechanical disc which locks when the tiller handle is in a fully upright or lowered position and requires the tiller handle to be actively engaged to travel.

Handle Controls: Dual thumb operated tiller handle provides superior control of forward and reverse direction. Depressing the reversing safety collision bumper on the tiller handle, when the equipment is traveling in reverse direction, will automatically stop and move the unit forward to help prevent injury. The tiller handle also contains lift and lower controls contained on both the top and bottom sides of the tiller handle, a horn button, and a turtle switch, which allows the Drum- or Roll-Hauler to be moved while the tiller handle is in a fully upright position, as well as offer a creep function for precise positioning.

Key Switch Display Assembly: Features a 2-inch display which includes a battery discharge indicator, hour-meter, and trouble code display. The Key on/off and red emergency stop switches are also included, which disable all functions when the key is in the off position, or removed, or when the red emergency switch in the engaged (pressed down) position.

Battery: DEKA 12-D85-9 wet cell, 24-volt, 340 amp-hour industrial battery with SB-175 connector.

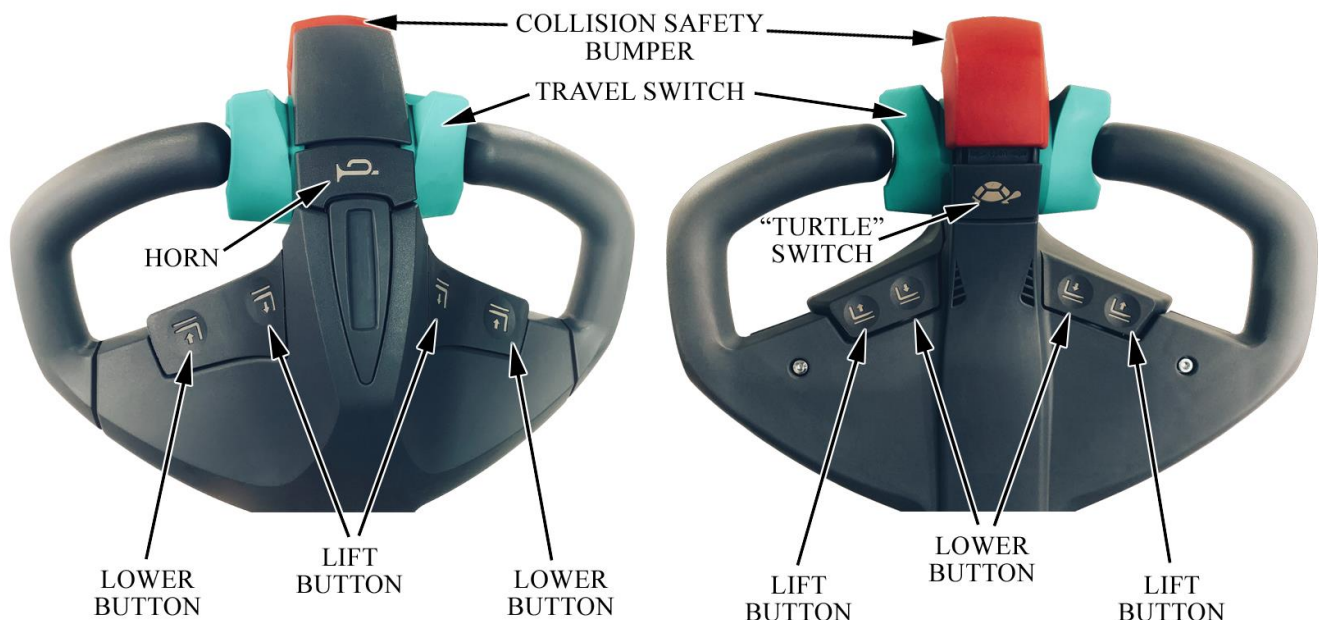
Lift Cylinder: Provided with a hydraulic velocity fuse and adjustable flow control valve to regulate lowering speed.

Wheels: 3" diameter x 4" wide articulating tandem polyurethane load wheels, 9" diameter x 2.75" wide rubber or polyurethane drive wheel, and 4" diameter x 1" wide stability casters on both sides to eliminate any side-to-side tilting.

DRUM- AND ROLL-HAULER TILLER HANDLE

TOP VIEW OF TILLER HANDLE

BOTTOM VIEW OF TILLER HANDLE



Most Drum- & Roll-Haulers are available on a 30-day trial toward purchase for first time buyers. The cost of the 30-day trial is 15% of the retail purchase price with options.

DRUM- AND ROLL-HAULER 2-INCH DISPLAY, KEY SWITCH AND RED EMERGENCY SWITCH

The equipment Drive Frame contains a **2-inch display**, which includes: the battery charge status, drive hours, travel speed profiles and error codes / event messages.

A **key switch**, which disables the unit when the key is in the “OFF” position. Removing the key prevents unauthorized use of the equipment.

A **red emergency switch** is also included, which immediately de-energizes the unit when the button is pressed down. The button is then rotated clockwise to re-energize the unit.



DRUM- AND ROLL-HAULER BASE FRAMES FROM 41.75” to 54” IN LENGTH

SHORTENED BASE FRAME LENGTHS:

For Non-rotating Drum-Haulers® a shortened base frame of 41.75” (106 cm) is available for narrow or tight applications (which reduces capacity)

For Rotating Drum- & Roll-Haulers shortened base frames of 41.75” (106 cm) or 46.5” (118 cm) are available for narrow or tight applications (which reduces capacity)

41.75” Base Frame



46.5” Base Frame



54” Base Frame



BATTERY OPTIONS



Wet Cell Industrial Batteries for Non-“EE” or “EE” environments

Drum- and Roll-Haulers come standard with a Deka Industrial D-Series Wet Cell Battery, which provides 340 Ah of dependable power. All Deka Batteries pass through more than 250 quality control checks to assure consistent quality every time and are designed and manufactured with the finest materials under strict computer control.

- Deka 12-D85-9 Wet Cell, 24Volt, 340 A.H. industrial battery
- Deka 12-D85-9-EE Wet Cell, 24Volt, 340 A.H. industrial battery

Gel Cell Industrial Batteries for Non-“EE” or “EE” environments

These Valve-Regulated Gel electrolyte batteries are designed to provide 300 Ah of reliable, maintenance-free power. The gelled electrolytes protect the battery plates making it ideal for renewable energy deep cycle applications.

- Deka 12-G75-9 Gel Cell, 24Volt, 300 A.H. industrial battery
- Deka 12-G75-9-EE Gel Cell, 24Volt, 300 A.H. industrial battery



Thin Plate Pure Lead Batteries for Non-“EE” or “EE” environments

Featuring proprietary Thin Plate Pure Lead (TPPL) technology, NexSys® batteries provide an advanced, cost-effective 274 Ah power solution.

NexSys batteries offer faster, more flexible charging – opportunity charge anytime the vehicle is stopped, during breaks or at the end of a shift. The virtually maintenance-free power solution never requires watering, battery washing or long equalize charges, is resistant to shock and vibration and with very low internal resistance, provides more power when you need it most.

- 24v, 274 A.H. NexSys Pure TPPL Maintenance Free Ind. Battery w/ on-board Charger
- 24v, 274 A.H. NexSys Pure TPPL Maintenance Free Ind. EE Battery w/ on-board Charger

CHARGING THE EQUIPMENT

The optional **MAC Charger** is a dual voltage AC charger for Wet Cell Batteries. The charger is provided with both 110- and 220-volt connectors. The operator must select the appropriate connector, and ensure the charger is set to the correct voltage via the selector switch on the face of the charger.



NON-ROTATING DRUM-HAULERS® - FEATURES & OPTIONS

NON-ROTATING DRUM-HAULERS® feature an Eagle-Grip® series clamp, which are fully mechanical and require no hydraulic or electrical connections and are designed to handle a wide range of chimed plastic, fiber, and steel drums.

Standard features include:

- Self-propelled unit with DC powered lift and travel
- Eagle-Grip 3 heavy duty single clamping mechanism provides approximately 5” (13 cm) of reach from the front of the base to allow operators to place or remove drums from the side of a pallet, floor scale, conveyor, containment pallet, flammable storage cabinet, drum warming oven, or from under a pump
- 800 lb. (363 kg) weight capacity
- Single stage mast to provide approximately 20” (51 cm) of lift from the floor to the bottom of the drum
- Narrow profile mast design, which gives operators great forward visibility while gripping, lifting & transporting a drum
- Transport drums up and down ramps or sloped surfaces
- 28.5” (72 cm) overall drive frame width with narrow 20.5” (52 cm) front mast plate and 46.5” (118 cm) length
- The ability to load and unload trucks, trailers, and overseas shipping containers

Popular options include:

- Eagle-Grip 4 heavy duty double clamping mechanism or Eagle-Grip® 2L light duty double clamping mechanism, for working with plastic, fiber, or open top drums
- Eagle-Grip 1 light duty single clamping mechanism, for handling light weight or empty drums
- Spark Resistant Clamp (all metal surfaces which contact the drum, including the clamping jaws, are stainless steel; includes anti-static grounding strap)
- Intrinsically safe or non-intrinsically safe scale systems for weighing drums or performing inventory
- FDA approved metallic gray powder coating for food and pharmaceutical applications
- Shortened base frame of 41.75” (118 cm) for narrow or tight applications (which reduces capacity)
- Increased lift heights of up to 144” (366 cm) above floor level for the ability to either single, double, or triple stack drums (contingent on equipment configuration)
- Increased drum weight capacity of up to 1500 lbs. (680 kg) - on single stage mast only
- Extended reach of 24” (61 cm) to enable operators to grip or release drums from one side of a 48” (122 cm) wide pallet.
- Elevated base frames for traveling over berms
- Gel Cell or NexSys Pure for a maintenance free battery
- Battery Roll out tray with conveyor and stand to support 2 batteries for three shift facilities
- Intertek Approved "EE" rating for hazardous areas (includes electrically enclosed drive controller, grounding strap, and “EE” rated battery)
- For European markets: ATEX Category 3G – ATEX Zone 2 Hazardous Areas is available



TRIAL TOWARD PURCHASE PROGRAM AVAILABLE ON MOST MODELS

Most Drum- & Roll-Haulers are available on a 30-day trial toward purchase for first time buyers. The cost of the 30-day trial is 15% of the retail purchase price with options.

NON-ROTATING DRUM-HAULERS®

The **Eagle-Grip® 3 Single Clamping Mechanism**, with up to a 1,500 lb. (680 kg) capacity, is standard on all non-rotating Drum-Haulers®.

EG3SCM



EG3SCMSRC – Spark Resistant Clamp

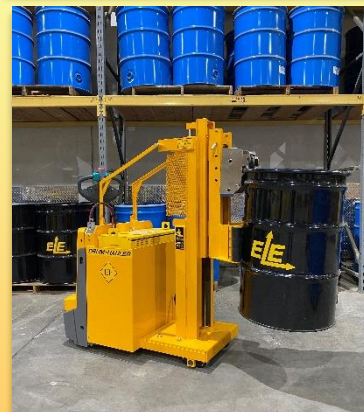


An **Eagle-Grip® 4 Double Clamping Mechanism**, with up to a 1,500 lb. (680 kg) capacity, is recommended for applications when handling fiber drums weighing more than 500 lbs. (227 kg), plastic drums exceeding 600 lbs. (272 kg) or steel drums exceeding 800 lbs. (363 kg). The EG4 double clamping mechanism is also recommended when gripping a drum with the lid removed.

EG4DCM



EG4DCMSRC – Spark Resistant Clamp



NON-ROTATING DRUM-HAULERS® (CONT.)

Drum-Hauler® Extended Reach Option with EG3 or EG4 - Up to 1,000 lb. Capacity



The **Eagle-Grip® EG1 Single Clamping Mechanism** is designed for handling light weight or empty drums. Up to 1,000 lb. (363 kg) capacity.



The **Eagle-Grip® EG2L Double Clamping Mechanism** is designed for working with plastic, fiber, or open top drums. Up to 1,000 lb. (453 kg) capacity.



Handling **Mauser O-top** style European plastic drums requires special modifications to the clamping mechanism(s). These modifications are available in **EG3 Mauser single** and **EG4 Mauser double** clamp configurations. If handling Mauser O-top style drums, as well as standard chimed drums, it will be necessary to purchase an additional clamp of either type. Clamping mechanisms are interchangeable for gripping Mauser O-top style and conventional chimed drums.

EG3M

EG4M



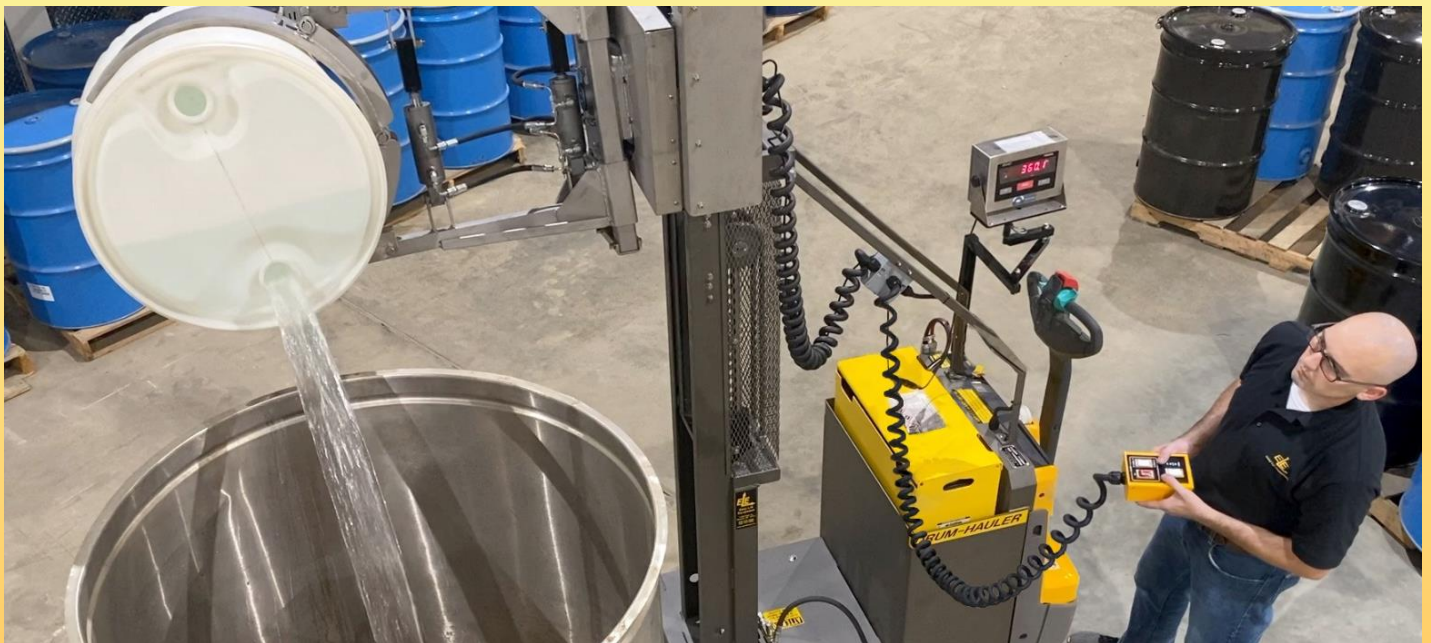
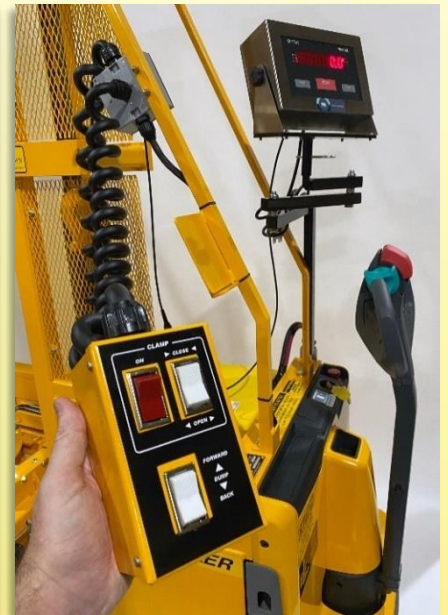
REMOTE-CONTROL BOX FUNCTIONS FOR ROTATING DRUM- & ROLL-HAULERS

Remote-Control Box Functions for Rotating Drum-Haulers® & Roll-Haulers

All rotating clamp models include a magnetic backed control box on a coil cord, which provides remote rotation & clamping functions. This allows the operator to control the clamp functions from various remote positions around the machine. The control box houses the switches for clamping, unclamping, 360° endless side-rotation (on CR models) or 180° forward rotation (on FCR models). An optional side shifter function is also available for side-rotation models. The size of the control box is dependent on the number of functions, as shown below. Clamping and side shifter switches also include a red safety switch to control these functions. This requires the operator to activate two switches when clamping, unclamping, or side shifting. This helps to prevent the accidental release of an elevated load. Control boxes are NOT provided on Drum-Haulers with EG3 and EG4 mechanical clamps & Roll-Haulers equipped with roll posts or non-rotating forks.

**Drum- & Roll-Hauler
Standard Remote-Control Boxes**

**The Remote-Control Box at
the end of the coiled cord**



ROTATING DRUM-HAULERS® - FEATURES & OPTIONS

ROTATING DRUM-HAULERS®, feature an **SR, CR, FSR, FCR, or RCR** style clamp designed to grip, lift, transport, and dispense a wide range of steel, plastic, or fiber drums, as well as cylinders.

Standard features include:

- Self-propelled unit with DC powered travel, clamp, lift, and rotation
- Grip drums ranging from 8” (20 cm) to 26” (66 cm) in diameter (depending on clamp)
- Rotate drums either 360° endlessly (either left or right) or 180° forward
- CR clamps provide approximately 10” (25 cm) of reach, and SR & RCR clamps provide approximately 7” (18 cm) of reach from the front of the base to allow operators to place or remove drums from the side of a pallet, floor scale, conveyor, containment pallet, flammable storage cabinet, drum warming oven, or from under a pump
- 800 lb. (363 kg) weight capacity
- Single stage mast to provide approximately 60” (152 cm) of lift from floor to bottom of the drum in a vertical position (contingent on equipment configuration)
- Narrow profile mast design gives operators great forward visibility while gripping, lifting, transporting, or rotating a drum
- A magnetic backed control box on a coil cord provides remote rotation and clamping functions
- Transport drums up and down ramps or sloped surfaces
- 28.5” (72 cm) overall drive frame width with a narrow 20.5” (52 cm) front mast plate width for single stage mast or 28.5” (72 cm) width for two stage mast, and 54” (137 cm) in length

Popular options for all Rotating Drum-Haulers® include:

- Intrinsically safe or non-intrinsically safe scale systems for dispensing drums by weigh or performing inventory
- Adjustable clamping pressure: Adjusts the factory set clamping pressure exerted on the drum
- FDA approved metallic gray powder coating for food and pharmaceutical applications
- Full 304 Stainless-Steel Construction for food and pharmaceutical applications
- Shortened base frame of 46.5” (118 cm) or 41.75” (106 cm) for narrow or tight applications (which reduces capacity)
- Increased lift heights of up to 144” (366 cm) above floor level (contingent on equipment configuration)
- Increased drum weight capacity of up to 1200 lbs. (544 kg) (contingent on equipment configuration)
- Extended reach of 24” (61 cm), available on side-rotation clamps, enables operators to grip or release drums from one side of a 48” (122 cm) wide pallet
- Elevated base frames for traveling over berms
- Gel Cell or NexSys Pure for a maintenance free battery
- Battery Roll out tray with conveyor and stand to support 2 batteries for three shift facilities
- Intertek Approved "EE" rating for hazardous areas (includes electrically enclosed drive controller, grounding strap, and “EE” rated battery)
- For European markets: ATEX Category 3G – ATEX Zone 2 Hazardous Areas is available



Most Drum- & Roll-Haulers are available on a 30-day trial toward purchase for first time buyers. The cost of the 30-day trial is 15% of the retail purchase price with options.

DRUM-HAULER® WITH STRAP ROTATOR

SR Strap Rotator are the most economical means to secure a drum for dispensing. SR clamps rotate 360° endlessly, either left or right. Drums must be removed from the pallet prior to securing two nylon ratchet straps around the container. All strap rotators can secure drums from 12" (31 cm) to 24" (61 cm) in diameter.

SR Clamp additional popular options include:

- A solid base can be incorporated into the rotator for extra stability for smaller containers
- A pony hold-down or foot assembly, which helps reduce the risk of slippage from the clamping jaws

SR 1224 Clamp for a 12" to 24" Diameter Drum - Up to 1,200 lb. Capacity



FSR Forward Strap Rotator are designed to strap, lift, and rotate a drum 180° forward. Drums must be removed from the pallet prior to securing two nylon ratchet straps around the container. All strap rotators can secure drums from 12" (31 cm) to 24" (61 cm) in diameter.

FSR Clamp additional popular options include:

- A solid base can be incorporated into the rotator for extra stability for smaller containers
- A pony hold-down or foot assembly, which helps reduce the risk of slippage from the clamping jaws

FSR 1224 Clamp for a 12" to 24" Diameter Drum - Up to 1,000 lb. Capacity



DRUM-HAULER® WITH CR CLAMP

CR Clamp Rotator are the most compact and widely used of all Drum-Hauler models. They are designed for handling a 20" (51 cm) to 24" (61 cm) diameter drum and are ideal for gripping, lifting, transporting, weighing, or dispensing drums when side rotation is required. In addition to handling steel and plastic drums, the CR clamp is also ideal for handling light weight fiber drums or sensitive drums subject to impressions. The hinged jaws are lined with white non-marking SBR rubber to assist in securely gripping the drum. An extended reach option enables the operator to grip or release drums from the far side of a 48" wide pallet, when all four sides are not accessible. This can be beneficial depending on how tightly drums are stored in production areas or when dispensing into tanks with recessed openings.

CR Clamp additional popular options include:

- Extended reach of 24" (61 cm) to enable operators to grip or release drums from one side of a 48" (122 cm) wide pallet.
- A pony hold-down or foot assembly to help reduce the risk of slippage from the clamping jaws
- A small drum adapter set which enables the clamp to grip smaller drums down to 14" (36 cm) in diameter
- A pail adapter set specifically designed for handling five-gallon pails
- A stainless-steel chute providing added reach when dispensing contents into vessels with inset openings
- Intrinsically safe or non-intrinsically safe scale systems for dispensing drums by weigh or performing inventory
- Side Shifter, providing the clamp with 4" (10 cm) of travel to the left & the right of the center position

CR 2024 Clamp for a 20" to 24" Diameter Drum w/ 8" High Fixed Clamping Pads - Up to 1,200 lb. Capacity



CR 2024 Clamp with 24" Extended Reach for a 20" to 24" Diameter Drum with 8" High Fixed Clamping Pads – Up to 800 lb. Capacity



DRUM-HAULER® WITH FCR CLAMP

FCR Forward Clamp Rotator are designed for handling drums from 20" (51 cm) to 24" (61 cm) in diameter and are ideal for gripping, lifting, transporting, weighing, or dispensing drums when 180° forward rotation is required. In addition to handling steel and plastic drums, the FCR clamp is also ideal for handling light weight fiber drums or sensitive drums subject to impressions. The hinged jaws are lined with white non-marking SBR rubber to assist in securely gripping the drum.

FCR Clamp additional popular options include:

- A pony hold-down or foot assembly to help reduce the risk of slippage from the clamping jaws
- A small drum adapter set which enables the clamp to grip smaller drums down to 14" in diameter
- A pail adapter set specifically designed for handling five-gallon pails
- An anti-drift brake rotation motor

FCR 2024 Clamp for a 20" to 24" Dia. Drum with 8" High Fixed Clamping Pads - Up to 1,000 lb Capacity



DRUM-HAULER® WITH CR OR FCR CLAMP OPTIONS

SMALL DRUM ADAPTER SET (for CR and FCR Clamps) allowing the clamp to grip drums from 14" (36 cm) to 20" (51 cm) in diameter. The SDA1420 is comprised of two individual curved sections with white non-marking rubber vulcanized to the metal curves. Each curve is slid onto a clamping jaw then locked into place by inserting a stainless-steel retaining pin & circle cotter pin on a lanyard. Available in safety orange powder coating, FDA metallic grey powder coating or stainless-steel construction.

**CR Clamp with
Small Drum Adapter**



**CR Clamp with
Small Drum Adapter holding Drum**



**FCR Clamp with
Small Drum Adapter**



DRUM-HAULER® WITH CR OR FCR CLAMP OPTIONS (CONT.)

PONY HOLD DOWN & FOOT ASSEMBLY (for CR and FCR Clamps). When handling heavy plastic, fiber, or tapered drums it may be necessary to add either a pony hold-down or foot support to reduce the risk of slippage from the clamping jaws. Both the CR and FCR clamping jaws have two pre-drilled and tapped locations for easy installation. Both supports are constructed in stainless steel for cleanliness and durability.

**CR Clamp
with Pony & Foot**



**CR Clamp
with Pony in use**



**CR Clamp
with Foot in use**



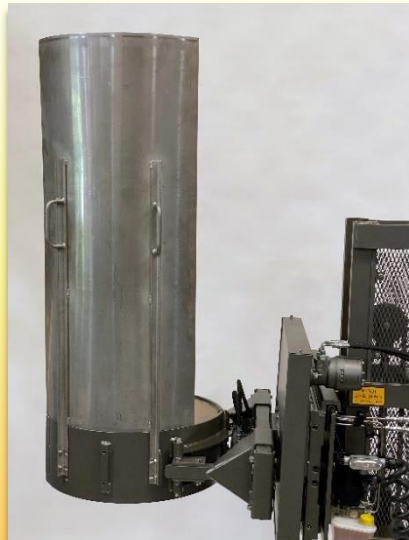
**FCR Clamp
with Pony & Foot in use**



PAIL ADAPTER SET (for CR and FCR Clamps) is specifically designed to handle 5-gallon plastic and steel pails for dispensing. Due to the necessity to clamp the pail from the bottom, it may be required to have the pails placed on top of two double-stacked pallets to achieve proper clamping elevation. Each curve is slid onto a clamping jaw then locked into place by inserting a stainless-steel retaining pin & circle cotter pin on a lanyard.



STAINLESS-STEEL CHUTE (for CR Clamp) which provides added reach when dispensing contents of drums into vessels with inset openings



DRUM-HAULER® WITH RCR1324-8 CLAMP

RCR1324-8 Roll Clamp Rotator (for use with drums), which is designed for handling drums from 13" (33 cm) to 24" (61 cm) in diameter and weighing up to 1,200 lbs. (544 kg). Available with either 8- or 16-inch-high clamping pads.

This clamp is generally purchased for handling smaller than 55-gallon-sized drums and smaller containers. The 8" high clamping pads are ideal for clamping in-between the center ribs of a steel drum. The 16" high clamping pads, which are available at time of order in lieu of 8" high clamping pads, are typically more ideal for handling roll materials but can also be used for gripping and handling plastic or fiber drums without ribs. This clamp features a stationary back pad and two clamping arms to grip the drum (or roll). A small drum/roll adapter is also available which reduces the clamping range diameter by 5" (13 cm).

RCR1324-8 Clamp additional popular options include:

- A small drum/roll adapter, which reduces the clamping range diameter by 5" (13 cm)
- Extended reach, for up to 24" (61 cm) of additional reach
- An anti-drift brake rotation motor
- Side Shifter, which provides the clamp with 4" (10 cm) of travel to the left & the right of the center position

RCR 1324 Clamp for a 13" to 24" Diameter Drum with 8" High Fixed Clamping Pads - Up to 1,200 lb. Capacity



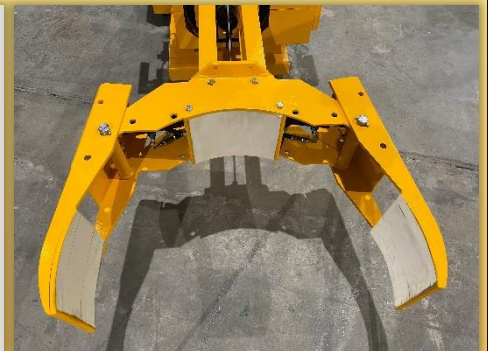
**RCR1324-8
Open Position**



**RCR1324-8 with Adapter
Reduces the clamping range to
8" (20 cm) to 19" (48 cm) in diameter**



**RCR1324-8 with
Extended Reach**



DRUM-HAULER® WITH RCR1626-8 CLAMP

RCR1626-8 Roll Clamp Rotator (for use with drums), which is designed for handling drums from 16" (41 cm) to 26" (66 cm) in diameter and weighing up to 1,200 lbs. (544 kg). Available with either 8- or 16-inch-high clamping pads.

This clamp is generally purchased for handling smaller than 55-gallon-sized drums and containers. The 8" high clamping pads are ideal for clamping in-between the center ribs of a steel drum. The 16" high clamping pads, which are available at time of order in lieu of 8" high clamping pads, are typically more ideal for handling roll materials but can also be used for gripping and handling plastic or fiber drums without ribs. This clamp features a stationary back pad and two clamping arms to grip the drum (or roll). A small drum/roll adapter is also available which reduces the clamping range diameter by 5" (13 cm).

RCR1626-8 Clamp additional popular options include:

- A small drum/roll adapter, which reduces the clamping range by 5" (13 cm)
- Extended reach, for up to 24" (61 cm) of additional reach
- An anti-drift brake rotation motor
- Side Shifter, which provides the clamp with 4" (10 cm) of travel to the left & the right of the center position

RCR 1626 Clamp for a 16" to 26" Dia. Drum with 8" High Flexible Clamping Pads - Up to 1,200 lb. Capacity



**RCR1626-8
Open Position**



**RCR1626-8
Closed Position**



**RCR1626-8 with Adapter
Reduces the clamping range to
11" (28 cm) to 21" (53 cm) in diameter**



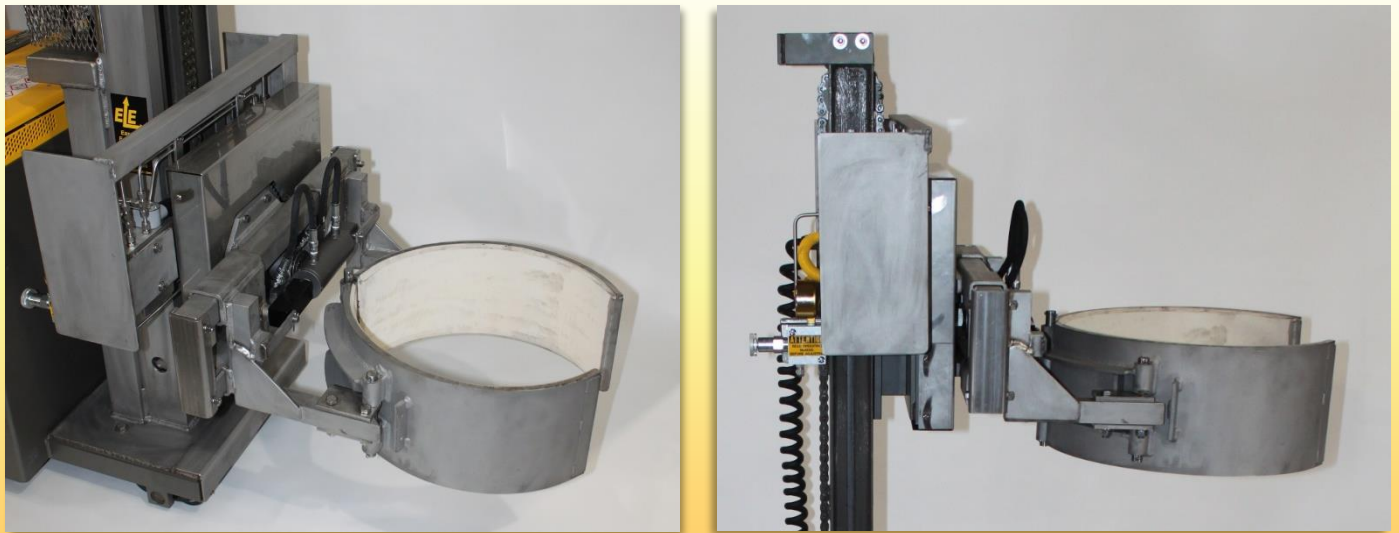
CUSTOM CLAMPS FOR SPECIAL APPLICATIONS

CUSTOM CLAMPS FOR SPECIAL APPLICATIONS Through the years, Easy Lift Equipment has designed clamp rotators for a wide variety of custom applications. Below are just a few examples of those custom clamps. For more information on our products or to discuss the specifics of your drum or roll handling project, please contact us today.

RCR1324-8 with Offset Clamping Jaws, which are designed for gripping very short drums from floor level



CR Clamp with Offset Clamping Jaws, are designed for gripping very short drums from floor level



**PLEASE CONTACT US
TO DISCUSS YOUR SPECIAL HANDLING PROJECT
FOR ALTERNATIVE SOLUTIONS.**

Most Drum- & Roll-Haulers are available on a 30-day trial toward purchase for first time buyers. The cost of the 30-day trial is 15% of the retail purchase price with options.

DRUM-HAULER® ADDITIONAL OPTIONS

SCALES for documenting weights or performing inventory are available for most models seen in this brochure. Scales are extremely accurate, eliminate the need for floor scales and are available from several indicator manufacturers for intrinsically safe or non-intrinsically safe areas

Non-intrinsically Safe Scales

Doran 7000XL



Rice Lake 680



Intrinsically Safe Scales

Rice Lake 882IS



Mettler Toledo 256x



* Other indicators are available upon request

LABEL PRINTER to quickly print custom labels containing the lot number, part number as well as the net weight of a drum or roll. The printer quickly outputs updated information for immediate labeling



HANDHELD BARCODE SCANNER, which is designed to increase input accuracy and efficiency



DRUM-HAULER® ADDITIONAL OPTIONS (CONT.)

FDA approved metallic gray powder coating for food and pharmaceutical applications (includes coated lift & rotation chains, and food grade grease & hydraulic fluid)



FULL 304 STAINLESS-STEEL CONSTRUCTION for food and pharmaceutical applications (includes coated lift & rotation chains, and food grade grease & hydraulic fluid)



DRUM-HAULER® ADDITIONAL OPTIONS (CONT.)

ELEVATED BASE FRAME for traveling over berms. The elevated base frame sits 4-1/2" (11 cm) high, in lieu of the standard base frame height of 2-5/8" (7 cm).



INCREASED LIFT HEIGHT of up to 144" (366 cm) above floor level (contingent on equipment configuration)

Single-Stage
60" (152 cm) of lift



Two-Stage
84" (213 cm) of lift



Two-Stage
96" (244 cm) of lift



RUBBER FOOT GUARD on rear of Drum- or Roll-Hauler, behind the drive tire



DRUM-HAULERS® ADDITIONAL OPTIONS (CONT.)

INTERTEK APPROVED “EE” RATING for hazardous areas (includes electrically enclosed drive controller, shielded wiring, grounding strap, rubber drive tire and “EE” rated battery)



ATEX Category 3G – ATEX Zone 2 Hazardous Areas – available for European markets (includes electrically enclosed drive controller, shielded wiring, grounding strap, rubber foot guard, rubber drive tire and ATEX rated battery)



*Shown without battery

Most Drum- & Roll-Haulers are available on a 30-day trial toward purchase for first time buyers. The cost of the 30-day trial is 15% of the retail purchase price with options.

DRUM-HAULERS® ADDITIONAL OPTIONS (CONT.)

ANTI-DRIFT BRAKE ROTATION MOTOR for suspending unbalanced loads in a rotated position for an extended period of time

Side Rotation Anti-Drift Brake Motor



Forward Rotation Anti-Drift Brake Motor



HEAVY-DUTY LINE GUARDS became standard starting in 2017 for all side-rotation clamps. As this was only an option prior to 2017, some photos within this brochure may not show this feature. Line Guards save on shipping damage, repair costs and down time by protecting hydraulic lines, pumps, reservoirs, and cartridge valves located behind all side-rotating clamps. Line Guards also help reduce cleaning time of the clamp components in food and pharmaceutical applications.

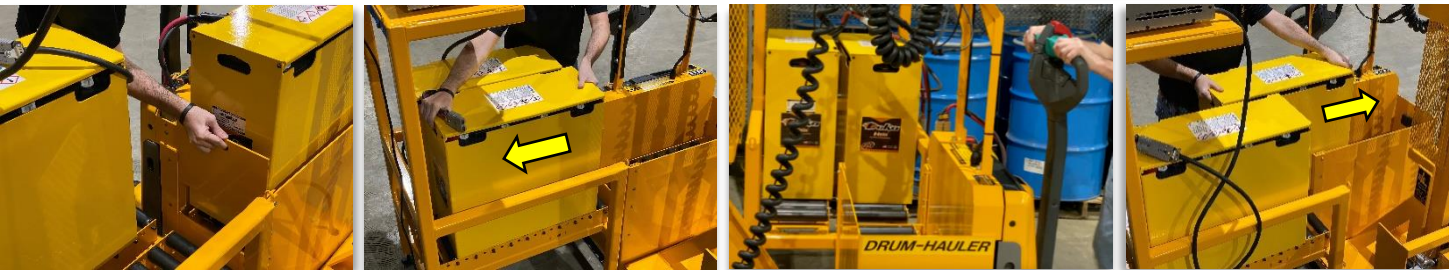
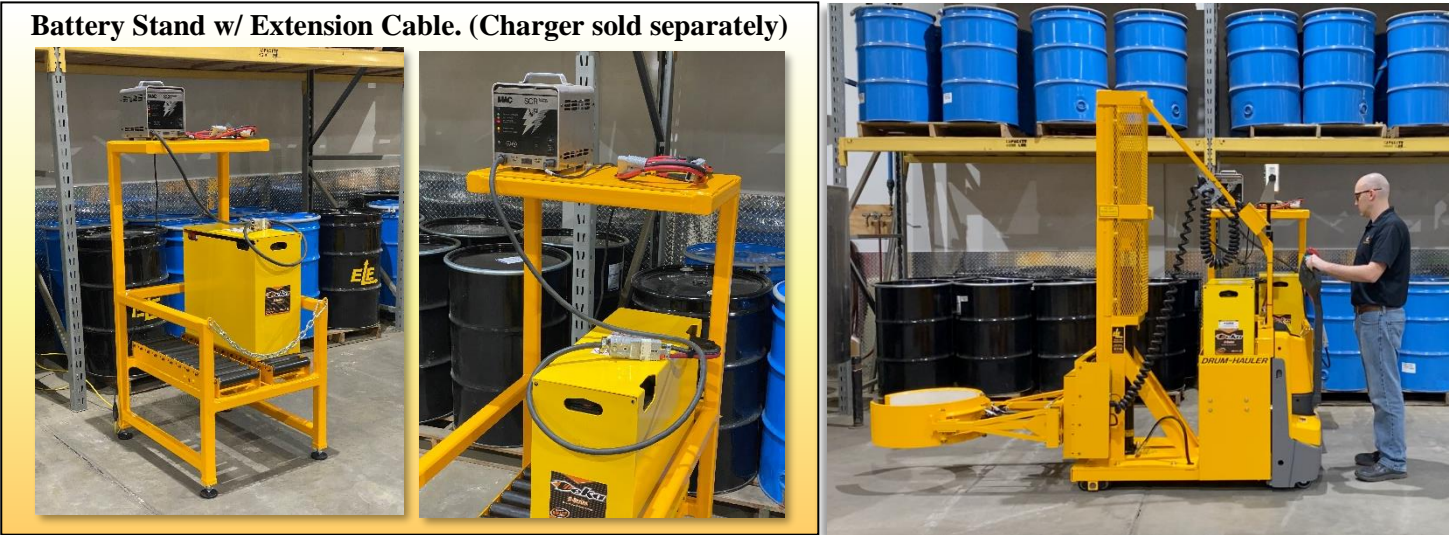


Most Drum- & Roll-Haulers are available on a 30-day trial toward purchase for first time buyers. The cost of the 30-day trial is 15% of the retail purchase price with options.

BATTERY ROLL-OUT TRAY & CHARGING STATION

BATTERY ROLL-OUT TRAY & CHARGING STAND Drum-Haulers® and Roll-Haulers can run continuously for up to 16 hours before recharging of the battery is required. For 3-shift operations, an optional Battery Roll-Out Tray and Charging Station is available. The Battery Stand, which is built according to the unit's battery height, contains two short conveyors which are designed to hold one additional battery and provide the ability to quickly change a low powered battery with a fully charged one. This prevents downtime and increases productivity. An extension cable is also provided with the Battery Stand to assist in the Battery changing process. The shelf of the Battery Stand conveniently supports the Battery Charger (sold separately). An additional battery must be ordered separately which charges on the stand while the Drum- or Roll-Hauler operates with the other battery. Battery heights may vary depending on the unit's base frame height & rated capacity.

Battery Stand w/ Extension Cable. (Charger sold separately)



The Battery Roll-Out Tray on the Drum- or Roll-Hauler includes a **removable door with a conveyor**, which is set to the same height as the



ROTATING ROLL-HAULERS – FEATURES & OPTIONS

ROTATING ROLL-HAULERS, feature an **RCR1324**, **RCR1626**, **RCR2336**, **RCR3148**, **SRCR** or **LRCR** clamp designed to handle a wide range of roll materials.

Standard features include:

- Self-propelled unit with DC powered travel, clamp, lift, and rotation
- 800 lb. (363 kg) weight capacity (excluding RCR3148 which has a 600 lb. (270 kg) max. capacity)
- Single stage mast to provide approximately 60” (152 cm) of lift from floor to center of the core (contingent on equipment configuration)
- Narrow profile mast design gives operators great forward visibility while gripping, lifting, transporting, or rotating a roll
- 16” (41 cm) high clamping pads lined with white non-marking rubber to securely grip a wide range of rolls. 8” (20 cm) high clamping pads are also available for these clamps
- A magnetic backed control box on a coil cord provides remote rotation and clamping functions
- Deka 12-D85-9 Wet Cell, 24 Volt, 340 A.H industrial battery
- Transport rolls up and down ramps or sloped surfaces
- Grip rolls ranging from 12” (33 cm) to 48” (102 cm) in diameter (contingent on equipment clamp)
- Rotate rolls 360° endlessly, either left or right
- A narrow 28.5” (72 cm) overall width and 54” (137 cm) length base frame

Popular options for all Rotating Drum-Haulers® include:

- Scale systems: For intrinsically safe or non-intrinsically safe areas for weighing rolls or performing inventory
- Adjustable clamping pressure: Adjusts the factory set clamping pressure exerted on the roll
- RCR small roll adaptor for reducing the clamping range by 5” (13 cm)
- 8” (20 cm) high clamping pads for narrow width rolls
- FDA approved metallic gray powder coating for food and pharmaceutical applications
- Shortened base frame of 46.5” (118 cm) or 41.75” (106 cm) for narrow or tight applications (which reduces capacity)
- Increased lift heights of up to 96” (244 cm) from floor to center of the core (contingent on equipment configuration)
- Increased roll weight capacity of up to 1000 lbs. (454 kg)
 - Available for **RCR2336**, **SRCR** & **LRCR** Clamps with a Single Stage Mast only
- Increased roll weight capacity of up to 1200 lbs. (544 kg)
 - Available for **RCR1324** & **RCR1626** Clamps with a Single Stage Mast only
- Elevated base frames for traveling over berms
- Gel Cell or NexSys Pure for a maintenance free battery
- Battery roll out tray with conveyor and stand to support 2 batteries for three shift facilities
- Intertek Approved "EE" rating for hazardous areas (includes electrically enclosed drive controller, grounding strap, and “EE” rated battery)
- For European markets: ATEX Category 3G – ATEX Zone 2 Hazardous Areas is available



Most Drum- & Roll-Haulers are available on a 30-day trial toward purchase for first time buyers. The cost of the 30-day trial is 15% of the retail purchase price with options.

ROLL-HAULER WITH RCR1324-16 CLAMP

RCR1324-16 Roll Clamp Rotator, with 16-inch-high clamping pads, is designed for handling rolls from 13" (33 cm) to 24" (61 cm) in diameter and weighing up to 1,200 lbs. (544 kg). The 16-inch-high clamping pads are ideal for clamping more sensitive rolls, as the taller pads spread the clamping force over a larger surface area, thus helping to minimize damage or impressions to the roll materials. Factory installed 8" (20 cm) high clamping pads are also available at the time of order. The clamp design features a stationary back pad and two clamping arms with fixed clamping pads. All three clamping pads are lined with SBR rubber to provide a durable yet secure non-marking surface to grip the roll. This clamp rotates 360 degrees endlessly, either left or right, at a controlled speed which enables accuracy when rotating a roll from vertical to horizontal positioning, or vice-versa.

RCR1324-16 Clamp additional popular options include:

- A small roll adapter, which reduces the clamping range diameter to 8" (20 cm) to 19" (48 cm)
- Factory installed 8" (20 cm) high clamping pads are also available at time of order for applications with smaller width rolls
- Extended reach, for up to 24" (61 cm) of additional reach
- An anti-drift brake rotation motor
- Side Shifter, which provides the clamp with 4" (10 cm) of travel to the left & the right of the center position

RCR 1324 Clamp for a 13" to 24" Dia. Drum with 16" High Fixed Clamping Pads - Up to 1,200 lb. Capacity



**RCR1324-16
Open Position**

**RCR1324-16
Closed Position**

**RCR1324-16 with Adapter
Reduces the clamping range to
8" (20 cm) to 19" (48 cm) in diameter**



ROLL-HAULER WITH RCR1626-16 CLAMP

RCR1626-16 Roll Clamp Rotator, with 16-inch-high clamping pads, is designed for handling rolls from 16" (41 cm) to 26" (66 cm) in diameter and weighing up to 1,200 lbs. (544 kg). The 16-inch-high clamping pads are ideal for clamping more sensitive rolls, as the taller pads spread the clamping force over a larger surface area, thus helping to minimize damage or impressions to the roll materials. Factory installed 8" (20 cm) high clamping pads are also available at the time of order. The clamp design features a stationary back pad and two clamping arms with flexible clamping pads. All three clamping pads are lined with SBR rubber to provide a durable yet secure non-marking surface to grip the roll. This clamp rotates 360 degrees endlessly, either left or right, at a controlled speed which enables accuracy when rotating a roll from vertical to horizontal positioning, or vice-versa.

RCR1626-16 Clamp additional popular options include:

- A small roll adapter, which reduces the clamping range diameter to 11" (28 cm) to 21" (53 cm)
- 8" (20 cm) high clamping pads are also available for applications with smaller width rolls
- Extended reach, for up to 24" (61 cm) of additional reach
- An anti-drift brake rotation motor
- Side Shifter, which provides the clamp with 4" (10 cm) of travel to the left & the right of the center position

RCR 1626 Clamp for a 16" to 26" Dia. Roll with 16" High Flexible Clamping Pads - Up to 1,200 lb. Capacity



**RCR1626-16
with FDA metallic grey powder
coating in
open position**



**RCR1626-16
with FDA metallic grey powder
coating in
closed position**



**RCR1626-16 with Adapter
Reduces the clamping range to
11" (28 cm) to 21" (53 cm) in
diameter**



ROLL-HAULER WITH RCR2336-16 CLAMP

RCR2336-16 Roll Clamp Rotator, with 16-inch-high clamping pads, is designed for handling rolls from 23" (58 cm) to 36" (91 cm) in diameter and weighing up to 1,000 lbs. (454 kg). The 16-inch-high clamping pads are ideal for clamping more sensitive rolls, as the taller pads spread the clamping force over a larger surface area, thus helping to minimize damage or impressions to the roll materials. Factory installed 8" (20 cm) high clamping pads are also available at the time of order. The clamp design features a stationary back pad and two clamping arms with flexible clamping pads. All three clamping pads are lined with SBR rubber to provide a durable yet secure non-marking surface to grip the roll. This clamp rotates 360 degrees endlessly, either left or right, at a controlled speed which enables accuracy when rotating a roll from vertical to horizontal positioning, or vice-versa.

RCR2336-16 Clamp additional popular options include:

- A small roll adapter, which reduces the clamping range diameter to 18" (46 cm) to 31" (79 cm)
- 8" (20 cm) high clamping pads are also available for applications with smaller width rolls
- An anti-drift brake rotation motor
- Side Shifter, which provides the clamp with 4" (10 cm) of travel to the left & the right of the center position

RCR 2336 Clamp for a 23" to 36" Diameter Roll w/ 16" High Flexible Clamping Pads - Up to 1,000 lb. Capacity



**RCR2336-16
Open Position**



**RCR2336-16
Closed Position**



**RCR2336-16 with Adapter
Reduces the clamping range to
18" (46 cm) to 31" (79 cm) in diameter**



ROLL-HAULER WITH RCR3148-16 CLAMP

RCR3148-16 Roll Clamp Rotator, with 16-inch-high clamping pads, is designed for handling rolls from 31" (79 cm) to 48" (122 cm) in diameter and weighing up to 600 lbs. (272 kg). The 16-inch-high clamping pads are ideal for clamping more sensitive rolls, as the taller pads spread the clamping force over a larger surface area, thus helping to minimize damage or impressions to the roll materials. Factory installed 8" (20 cm) high clamping pads are also available at the time of order. The clamp design features a stationary back pad and two clamping arms with flexible clamping pads. All three clamping pads are lined with SBR rubber to provide a durable yet secure non-marking surface to grip the roll. This clamp rotates 360 degrees endlessly, either left or right, at a controlled speed which enables accuracy when rotating a roll from vertical to horizontal positioning, or vice-versa.

RCR3148-16 Clamp additional popular options include:

- A small roll adapter, which reduces the clamping range diameter to 26" (66 cm) to 43" (109 cm)
- 8" (20 cm) high clamping pads are also available for applications with smaller width rolls
- An anti-drift brake rotation motor
- Side Shifter, which provides the clamp with 4" (10 cm) of travel to the left & the right of the center position

RCR 3148 Clamp for a 31" to 48" Diameter Roll with 16" High Flexible Clamping Pads - Up to 600 lb. Capacity



**Side Rotation
Anti-Drift Brake Motor**



**RCR3148-16
Closed Position**



ROLL-HAULER WITH SRCR CLAMP

SRCR Small Roll Clamp Rotator, is designed for handling rolls from 12" (30 cm) to 26" (66 cm) in diameter and weighing up to 600 lbs. (272 kg). The larger hydraulic clamping arm is equipped with two position settings, which allows the clamp to handle this wide range of roll diameters. The most valuable feature of this clamp is its ability to grip and handle rolls from either a vertical or horizontal position. This feature is possible due to the SRCR clamp having a lower fixed arm and an upper hydraulic clamping arm. The lower arm acts as a scoop, allowing the clamp to get a clamping pad underneath a horizontal roll. The hydraulic arm then clamps down securing the roll for rotation or transport. This clamp is available with either 8- or 16-inch-high clamping pads. Both clamping pads are lined with SBR rubber to provide a durable yet secure non-marking surface to grip the roll. This clamp rotates 360 degrees endlessly, either left or right at a controlled speed, which enables accuracy when rotating a roll from vertical to horizontal positioning, or vice-versa. The larger hydraulic clamping arm is equipped with two position settings: The inner pin position handles 12" (30 cm) to 22" (56 cm) diameter rolls, while the outer pin position handles 18" (46 cm) to 26" (66 cm) diameter rolls.

SRCR Clamp additional popular options include:

- An anti-drift brake rotation motor
- 8" (20 cm) high clamping pads are also available for applications with smaller width rolls
- Side Shifter, which provides the clamp with 4" (10 cm) of travel to the left & the right of the center position

SRCR 1226 Clamp for a 12" to 26" Diameter Roll with 16" High Flexible Clamping Pads - Up to 1,000 lb. Capacity



SRCR Inner Pin Position
Clamping range
12" (30 cm) to 22" (56 cm)
in diameter.



SRCR Outer Pin Position
Clamping range
18" (46 cm) to 26" (66 cm) in
diameter.



SRCR Clamp
picking or placing
a horizontal roll

SRCR Clamp
picking or placing
a vertical roll



ROLL-HAULER WITH LRCR CLAMP

LRCR Large Roll Clamp Rotator, is designed for handling rolls from 20" (51 cm) to 40" (102 cm) in diameter and weighing up to 600 lbs. (272 kg). The lower fixed arm has two position settings, which allows the clamp to handle this wide range of roll diameters. The most valuable feature of this clamp is its ability to grip and handle rolls from either a vertical or horizontal position. This feature is possible due to the LRCR clamp having a lower fixed arm and an upper hydraulic clamping arm. The lower arm acts as a scoop, allowing the clamp to get a clamping pad underneath a horizontal roll. The hydraulic arm then clamps down securing the roll for rotation or transport. This clamp is available with either 8- or 16-inch-high clamping pads. Both clamping pads are lined with SBR rubber to provide a durable yet secure non-marking surface to grip the roll. This clamp rotates 360 degrees endlessly, either left or right at a controlled speed, which enables accuracy when rotating a roll from vertical to horizontal positioning, or vice-versa. The larger hydraulic clamping arm is equipped with two position settings: The inner position handles 20" (51 cm) to 36" (92 cm) diameter rolls, while the outer position handles 24" (61 cm) to 40" (102 cm) diameter rolls.

LRCR Clamp additional popular options include:

- An anti-drift brake rotation motor
- 8" (20 cm) high clamping pads are also available for applications with smaller width rolls
- Side Shifter, which provides the clamp with 4" (10 cm) of travel to the left & the right of the center position

LRCR 2040 Clamp for a 20" to 40" Diameter Roll with 16" High Flexible Clamping Pads - Up to 1,000 lb. Capacity



LRCR Inner Position
Clamping range
20" (51 cm) to
36" (91 cm) in diameter



LRCR Outer Position
Clamping range
24" (61 cm) to 40" (102 cm)
in diameter.



**LRCR Clamp picking or
placing a
horizontal roll**



**LRCR Clamp
picking or placing
a vertical roll**



ROLL-HAULER ADDITIONAL OPTIONS

ADJUSTABLE CLAMPING PRESSURE, which allows operators to adjust the factory set clamping pressure exerted on the drum or roll, depending on clamp and application, such as handling sensitive rolls materials subject to impressions.

**Side-Rotation
Adjustable Clamping Pressure**



**Forward-Rotation
Adjustable Clamping Pressure**



**Side-Rotation Clamp w/ Side
Shifter & Adjustable Clamping
Pressure**



SIDE SHIFTER, (for CR, RCR, LRCR, and SRCR Clamps) which provides the clamp with 4" (10 cm) of travel to the left & the right of the center position. This enables the operator to side shift the clamp to the left or right, which can be a useful tool when trying to dispense material into small reactor openings. Side shifters are only available on single stage mast units with side rotation clamps.

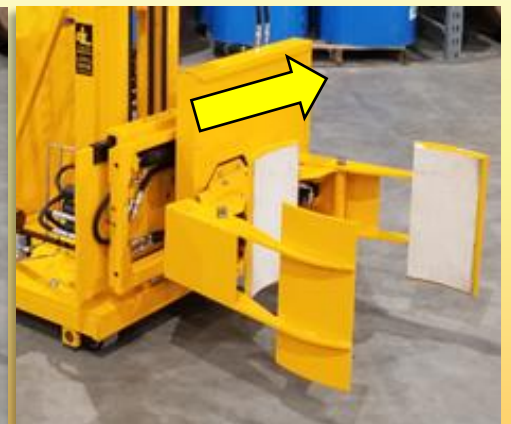
Side Shift Right



Center Position



Side Shift Left



Most Drum- & Roll-Haulers are available on a 30-day trial toward purchase for first time buyers. The cost of the 30-day trial is 15% of the retail purchase price with options.

RH4000 & RH6000 SELF-POWERED ROLL TRANSPORTERS

RH4000 & RH6000 are designed for lifting and transporting large rolls weighing up to 4000 lb. (1815 kg) or 6000 lb. (2722 kg) respectively. The lifting forks are equipped with fixed, cushioned roll supports to protect the roll's surface when lifted. The support cushions are designed to lift large diameter roll several inches above the floor for safe and easy transport. The length of the roll supports can be 36" (91 cm), 48" (122 cm), or 60" (152 cm) depending on the customers' requirements. An adjustable position stabilization bar is provided to help increase safety when transporting narrow width rolls or coils. All models have the same standard features of other Drum- & Roll- Haulers but use a slightly smaller Deka 12-D85-7 24v, 255 A.H. Deka Industrial Wet Cell Battery.



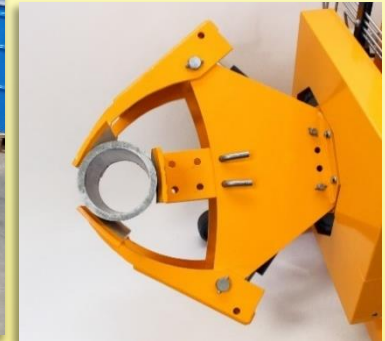
CYLINDER HANDLING WITH CCR CLAMP

CCR Cylinder Clamp Rotators are the safe and ergonomic solution for clamping, rotating, and transporting cylinders from 5" (13 cm) to 13" (33 cm) in diameter, depending on back pad positioning. The CCR Clamp offers 360° endless side rotation, either left or right, and is available with either 8" (20 cm) or 16" (41 cm) clamping pads. The back pad offers three settings for a range of cylinder diameters.

CCR Clamp additional popular options include:

- Extended reach, for up to 24" (61 cm) of additional reach
- An anti-drift brake rotation motor

CCR 513 Clamp for a 5" to 13" Diameter Drum w/ 8" or 16" High Fixed Clamping Pads - Up to 1,000 lb. Cap.



Back Pad Setting 1:
Clamping range diameter
8" (20 cm) to 13" (33 cm)

Back Pad Setting 2:
Clamping range diameter
6" (15 cm) to 11" (28 cm)

Back Pad Setting 3:
Clamping range diameter
5" (13 cm) to 7" (18 cm)



ROLL-POSTS, TANK HAULERS & WALKIE STACKERS

ROLL-HAULERS WITH ROLL-POSTS - Various lengths are available for transporting rolls by the core. Optional side shifters are helpful in positioning the tapered end of the post through the rolls' core. Available in single or two stage masts in capacities of up to 1500 lb. (680 kg), depending on the length of the roll-post.



TANK HAULERS – Which are available with either elevating or fixed posts are designed to transport tanks or other wheeled objects requiring powered travel assist. There are various types of elevating posts available to suite specific needs. Fixed post models require manually securing straps or pins to mate the posts with the fixture on the tank or wheeled object.



COUNTER-BALANCED WALKIE STACKERS - Haulers with forks, better known as Counter-Balanced Walkie Stackers are available in weight capacities up to 1200 lb. (540 kg) (contingent on equipment configuration) with single or two-stage masts. Forks can be adjustable or fixed and can be installed on side- shifters or rotators. For custom applications, forks can be attached to rotators or clamp rotators.



Easy Lift Equipment, Inc.
2 Mill Park Ct.
Newark, DE. 19713
800-233-1800
or 302-737-7000
Fax: 302-737-7333
Email: sales@easylifteqpt.com
www.easylifteqpt.com

ISO 9001: 2015 Certified Company

